

NOTES:

- SEE SHEET 2 OF 3 FOR LEGEND.
- ELEVATIONS SHOWN HEREON REFER TO THE NATIONAL GEODETIC VERTICAL DATUM OF 1929 (MEAN SEA LEVEL).
- THE 30' CONTOUR LINE SHOWN (CONSERVANCY DISTRICT) IS BASED ON ACTUAL FIELD DETERMINATION OF ELEVATION 30' ON THE GROUND.
- THE 100 YEAR FLOODPLAIN ELEVATION IN THIS PORTION OF THE MILES RIVER IS ELEVATION 28.0 FLOOD INSURANCE RATE MAP - COMMUNITY #250084 DATED 6/4/90.
- WETLANDS SHOWN HEREON WERE DELINEATED BY CAROL JOHNSON ASSOCIATES WITH THE EXCEPTION OF THE FOLLOWING: FLASGS DESIGNATED L.E.C. WERE PLACED BY LELITO ENVIRONMENTAL CONSULTANTS, INC. AND THOSE FLAGS DESIGNATED WITH THE SUFFIX "A" WERE PLACED BY THE HAMILTON CONSERVATION COMMISSION.
- WETLAND FLASGS #225 THROUGH #230 WERE NOT REVIEWED BY THE HAMILTON CONSERVATION COMMISSION DURING THE FEBRUARY 4, 1995 SITE WALK.
- UNDERGROUND UTILITIES SHOWN HEREON ARE COMPILED FROM FIELD LOCATIONS OF STRUCTURES AND FROM AVAILABLE RECORD INFORMATION ON FILE AT THE TOWN ENGINEER'S OFFICE, TOWN D.P.W., MASS HIGHWAY DEPT., AND UTILITY COMPANIES. OTHER UNDERGROUND SERVICES EXIST. IT SHALL BE THE RESPONSIBILITY OF THE DESIGN ENGINEER AND THE CONTRACTOR TO VERIFY THE LOCATION, SIZE AND ELEVATION OF ALL UTILITIES WITHIN THE AREA OF PROPOSED WORK AND TO CONTACT "DUG-SAFE" AT 1-800-322-4844 AT LEAST 72 HOURS PRIOR TO ANY EXCAVATION, DEMOLITION OR CONSTRUCTION.
- LOCATION OF SEPTIC LEACHING FIELD FROM PLAN ENTITLED "HAMILTON - WENHAM REGIONAL HIGH SCHOOL" BY KILHAM, HOPKINS, GREELEY & BRODIE, ARCHITECTS DATED 3/30/61.
- INTERIOR BUILDING PARTITIONS SHOWN HEREON ARE APPROXIMATE ONLY AND ARE NOT TO BE USED FOR DESIGN PURPOSES.
- EVIDENCE OF UNDERGROUND ELECTRIC LINES EXIST AT THE UTILITY POLES AND PARKING LOT LIGHTS SHOWN HEREON. THE LOCATIONS OF SAID LINES ARE UNKNOWN.

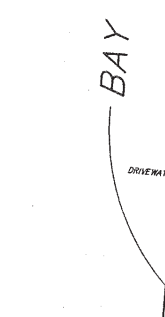
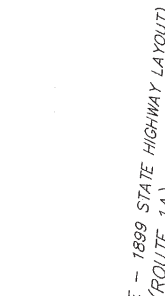
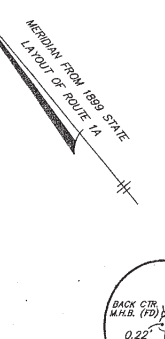
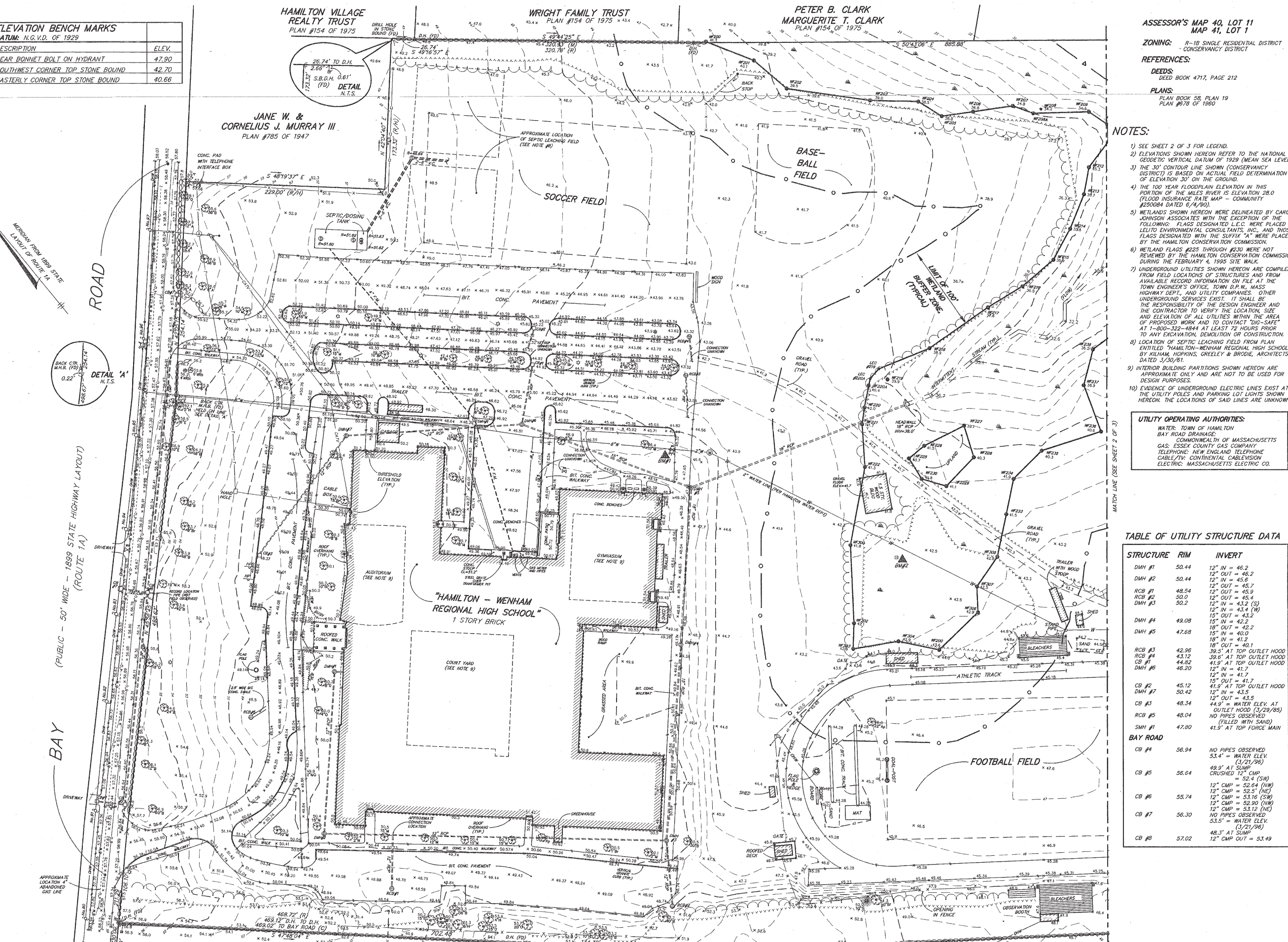
UTILITY OPERATING AUTHORITIES:
 WATER: TOWN OF HAMILTON
 BAY ROAD DRAINAGE:
 COMMONWEALTH OF MASSACHUSETTS
 GAS: ESSEX COUNTY GAS COMPANY
 TELEPHONE: NEW ENGLAND TELEPHONE
 CABLE/TV: CONTINENTAL CABLEVISION
 ELECTRIC: MASSACHUSETTS ELECTRIC CO.

TABLE OF UTILITY STRUCTURE DATA

STRUCTURE	RIM	INVERT
DMH #1	50.44	12" IN = 46.2
DMH #2	50.44	12" OUT = 46.2
RCB #1	48.54	12" IN = 45.8
RCB #2	50.0	12" OUT = 45.7
DMH #3	50.2	12" IN = 45.4
DMH #4	49.08	12" IN = 43.2 (S)
DMH #5	47.68	12" IN = 43.4 (W)
RCB #3	42.96	15" OUT = 43.2
RCB #4	43.12	15" IN = 42.2
DMH #6	44.82	18" OUT = 40.0
DMH #7	46.20	18" IN = 41.2
CB #2	45.12	18" OUT = 40.1
DMH #7	50.42	12" IN = 41.7
CB #3	48.34	12" OUT = 41.7
RCB #5	48.04	44.9' = WATER ELEV. AT OUTLET HOOD (3/29/85)
SMH #1	47.80	NO PIPES OBSERVED (FILLED WITH SAND)
BAY ROAD		41.9' AT TOP FORCE MAIN
CB #4	56.94	NO PIPES OBSERVED 53.4' = WATER ELEV. (3/21/96)
CB #5	56.64	49.9' AT SUMP CRUSHED 12" CMP 12" CMP = 52.4 (SW) 12" CMP = 52.64 (NW) 12" CMP = 52.5' (NE)
CB #6	55.74	12" CMP = 53.16 (SW) 12" CMP = 52.90 (NW) 12" CMP = 53.12 (NE)
CB #7	56.30	NO PIPES OBSERVED 53.5' = WATER ELEV. (3/21/96)
CB #8	57.02	48.3' AT SUMP 12" CMP OUT = 53.49

ELEVATION BENCH MARKS
 DATUM: N.G.V.D. OF 1929

NO.	DESCRIPTION	ELEV.
1.	REAR BONNET BOLT ON HYDRANT	47.90
2.	SOUTHWEST CORNER TOP STONE BOUND	42.70
3.	EASTERLY CORNER TOP STONE BOUND	40.66



FRANCIS J. HALLOWELL, II
 PLAN #498 OF 1954

J. KURT &
 JANET B. MILLER
 PLAN BOOK 161, PLAN 31

J. KURT &
 JANET B. MILLER
 PLAN BOOK 161, PLAN 31

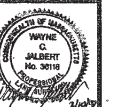
LONGMEADOW WAY
 (50' WIDE - PRIVATE)

SCALE: 1" = 40'
 0 20 40 80 160

HSA
 HANCOCK SURVEY ASSOCIATES, INC.
 255 NEWBURY STREET, DANVERS, MASSACHUSETTS 01923
 (978) 777-3600 (978) 662-9669

HAMILTON-WENHAM REGIONAL SCHOOL
 HAMILTON, MASSACHUSETTS
 EXISTING CONDITIONS

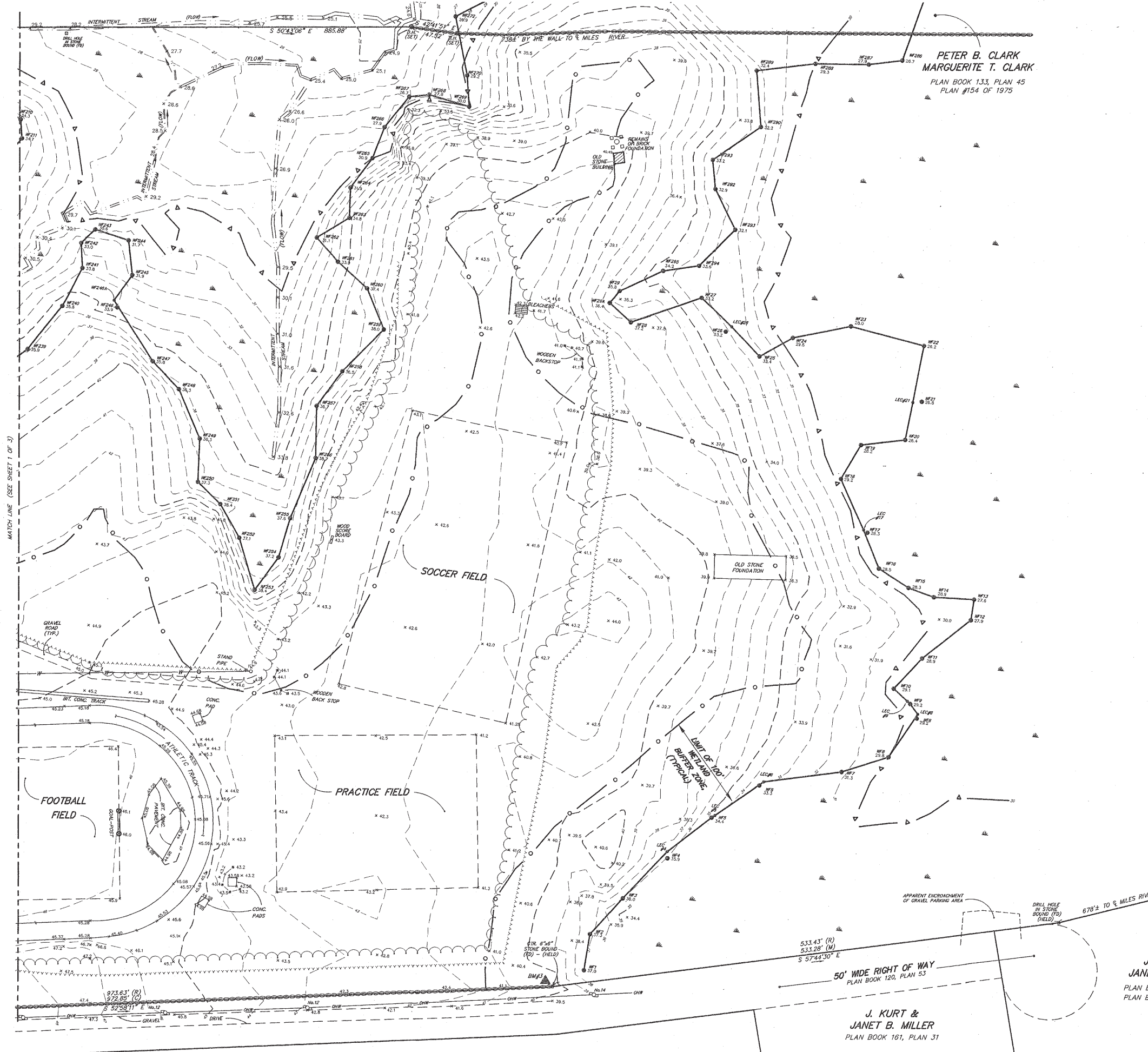
X1



NOTES:

1) SEE SHEET 1 OF 3 FOR ADDITIONAL NOTES, REFERENCES, AND BENCHMARK DATA.

PETER B. CLARK
MARGUERITE T. CLARK
PLAN BOOK 133, PLAN 45
PLAN #154 OF 1975



LEGEND

- 52 --- SURFACE CONTOUR
 - 32.53 SPOT ELEVATION
 - HEDGE/SHRUB LINE
 - PROMINENT DECIDUOUS TREE WITH ELEVATION, SIZE AND SPECIES
 - APPROXIMATE TREE "TRUNK LINE"
 - WOODEN FENCE
 - CHAINLINK FENCE
 - SEWER & MANHOLE, MATERIAL & SIZE
 - SEWER FORCE MAIN & SIZE
 - DRAIN, CATCH-BASIN, MANHOLE, ROUND CATCH-BASIN, MATERIAL & SIZE
 - WATER MAIN WITH SIZE, GATE VALVE, FIRE HYDRANT & WATER MANHOLE
 - GAS MAIN & GATE VALVE & GATE VALVE
 - U-TILE AND DESIGNATION, OVERHEAD WIRES AND GUY WIRE
 - LIGHTPOLE
 - FLOOD LIGHT
 - ROUND CATCH BASIN
 - ELECTRIC MANHOLE & UNDERGROUND ELECTRIC LINES
 - TELEPHONE MANHOLE & UNDERGROUND TELEPHONE LINES
 - BUILDING ENTRANCE
 - D.H. DRILL HOLE
 - S.B.D.H. STONE BOUND WITH DRILL HOLE
 - RCP REINFORCED CONCRETE PIPE
 - V.C. WTRIFIED CLAY
 - CMP CORRUGATED METAL PIPE
 - (R) RECORD
 - (C) CALCULATED
 - (R/H) RECORD AND HELD
 - (M) FIELD MEASURED
 - 35.6 LINE OF BORDERING VEGETATED WETLAND WITH FLAG NUMBER AND ELEV.
 - LIMIT OF 100' WETLAND BUFFER ZONE
 - 50' CONTOUR CONSERVANCY DISTRICT
 - STONE WALL
 - CATV UNDERGROUND CABLE TV LINE
 - EDGE OF PAVEMENT
 - 45.12 VERTICAL GRANITE CURB WITH TOP AND BOTTOM CURB ELEVATIONS
 - 44.82
- PLANT SPECIES:
- E ELM (*Ulmus americana*)
 - M MAPLE (*Acer sp.*)
 - B BEECH (*Fagus grandifolia*)
 - O OAK (*Quercus rubra*)
 - D DOGWOOD (*Cornus sp.*)
 - A ASH (*Fraxinus sp.*)
 - MP MACHOLIA (*sp.*)
 - Rh RHODODENDRON (*sp.*)
 - Ap APPLE (*Malus sp.*)
 - R RIBBON (*Betula sp.*)
 - L LINDEN (*Tilia pennsylvanica*)
 - S SPRUCE (*Picea sp.*)
 - H HICKORY (*Carya sp.*)

J. KURT &
JANET B. MILLER
PLAN BOOK 161, PLAN 31
PLAN BOOK 120, PLAN 53

J. KURT &
JANET B. MILLER
PLAN BOOK 161, PLAN 31

SCALE: 1" = 40'
0 20 40 80 160