

Hamilton Wenham HS Complex

South Hamilton, MA

Grid Summary

Name Zero Grid
Spacing 20.0' x 20.0'
Height 3.0' above grade

Illumination Summary

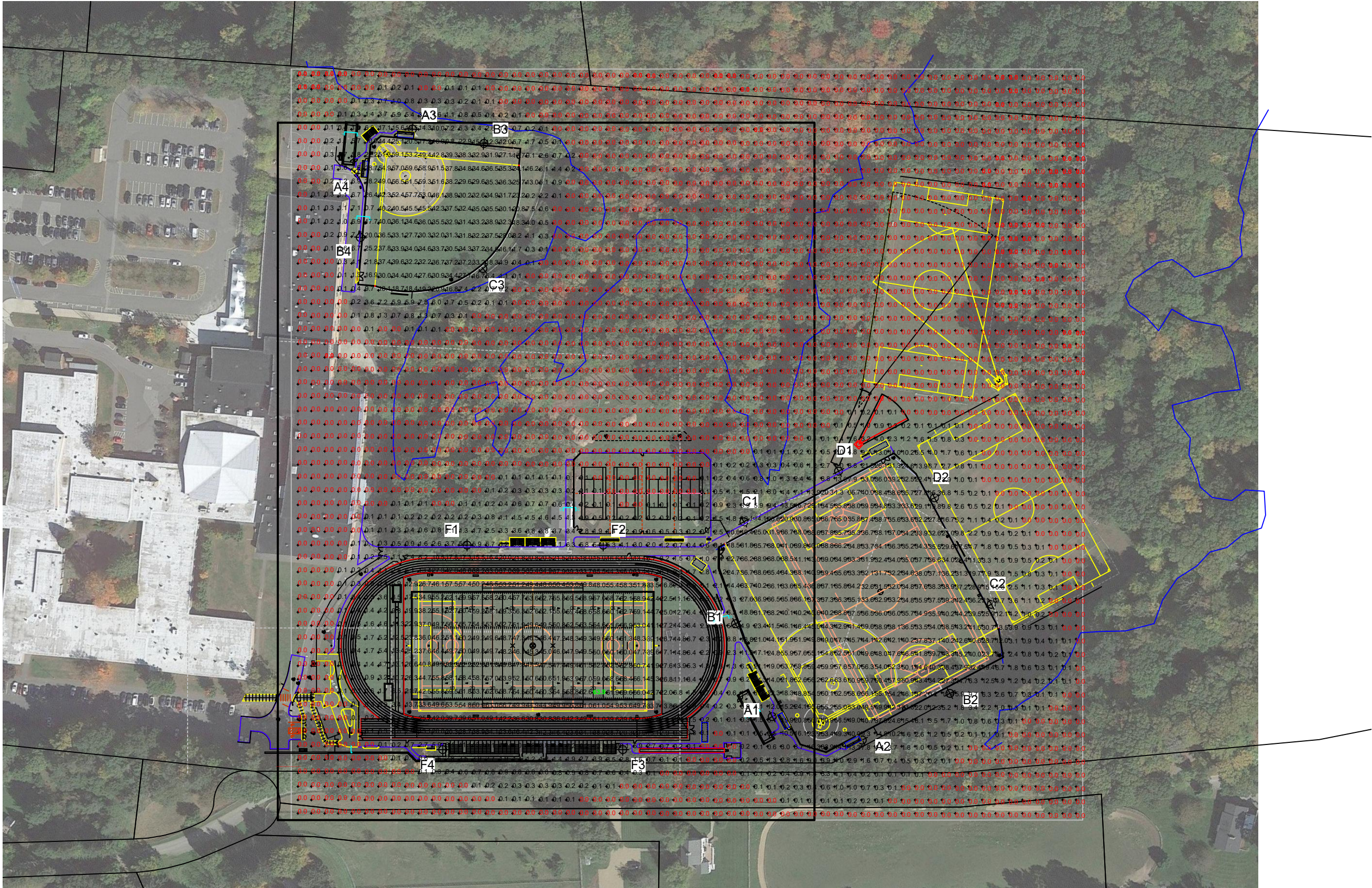
MAINTAINED HORIZONTAL FOOTCANDLES	
	Entire Grid
Scan Average	8.89
Maximum	64
Minimum	0
Avg/Min	-
Max/Min	-
UG (adjacent pts)	184.84
	CU 0.87
No. of Points	3304
LUMINAIRE INFORMATION	
Applied Circuits	A,B,C,D
No. of Luminaires	129
Total Load	114.78 kW

Guaranteed Performance: The ILLUMINATION described above is guaranteed per your Musco Warranty document and includes a 0.95 dirt depreciation factor.

Field Measurements: Individual field measurements may vary from computer-calculated predictions and should be taken in accordance with IESNA RP-6-15.

Electrical System Requirements: Refer to Amperage Draw Chart and/or the "Musco Control System Summary" for electrical sizing.

Installation Requirements: Results assume ± 3% nominal voltage at line side of the driver and structures located within 3 feet (1m) of design locations.



SCALE IN FEET 1 : 150

0'

150'

300'

ENGINEERED DESIGN

By: T.Lanphier • File #108724H-Prod (R2) • 17-Sep-24

Pole location(s) ⊕ dimensions are relative
to 0,0 reference point(s) ✕



We Make It Happen.®

Not to be reproduced in whole or part without the written consent of Musco Sports Lighting, LLC. ©1981, 2023 Musco Sports Lighting, LLC.

ILLUMINATION SUMMARY